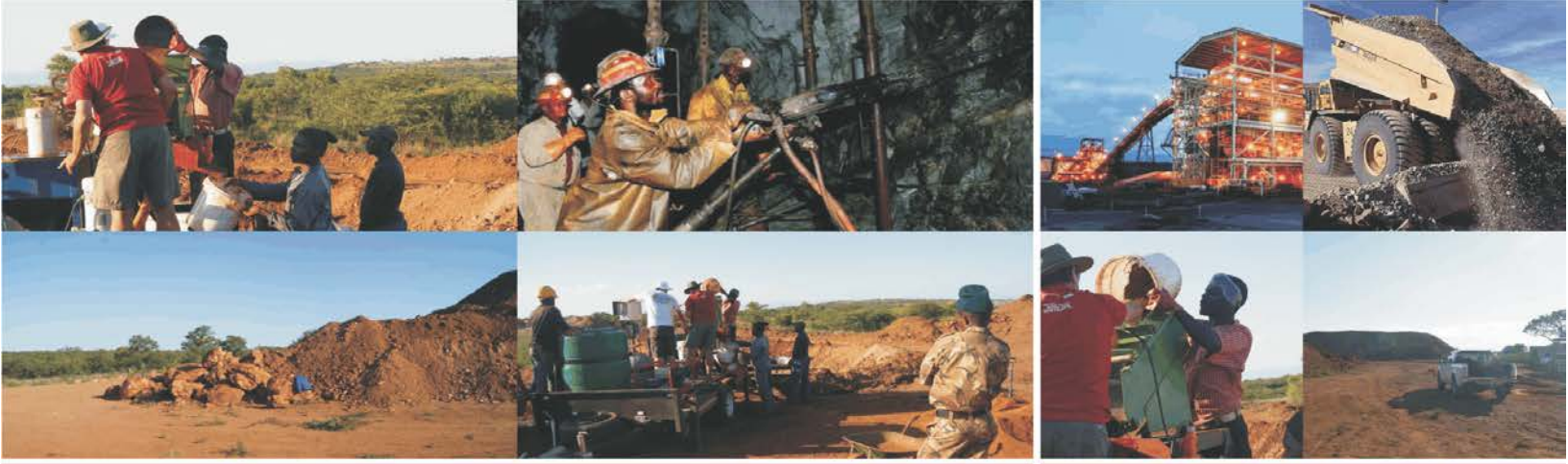




WATTPOWER
MINERAL PROCESSING

Company Profile



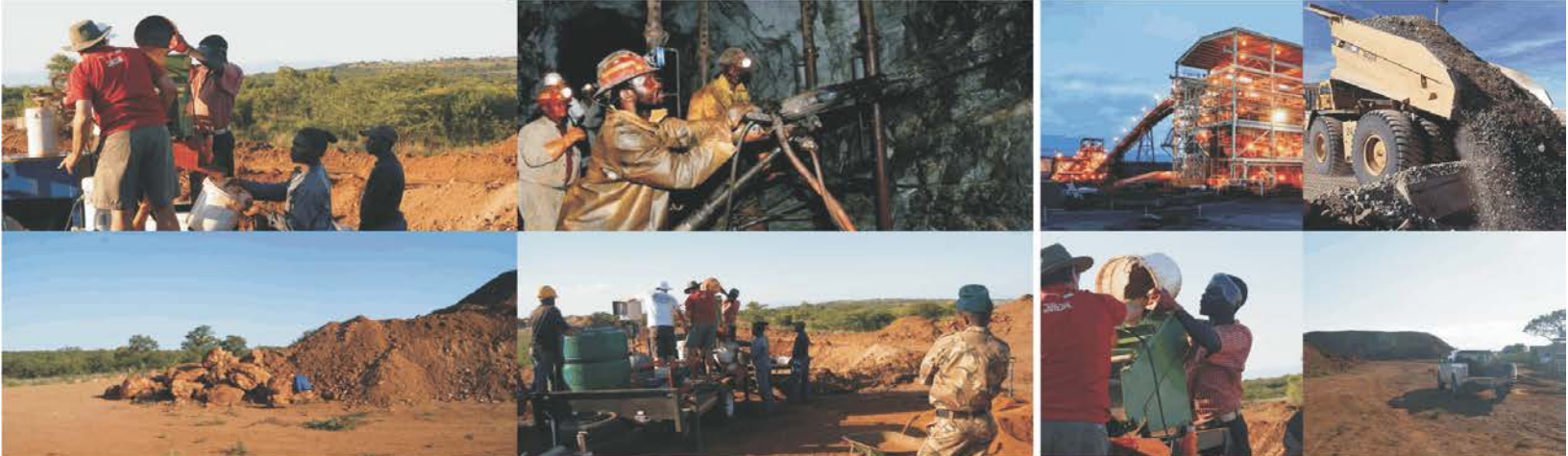


COMPANY OVERVIEW

BACKGROUND

WATTPOWER Mineral Processing (Pty) Ltd. is a South African mineral processing services company with business interest in the African mining sector. The company was founded in 2012 with its primary business in mineral processing consultancy and process services. The company latter expanded its business by acquiring expertise that positioned it be a complete solution service provider in the mining industry.

With the highly skilled and competent team the company is positioned to develop mining and mineral processing businesses from conceptual studies, designs, pre-feasibility studies, feasibility studies, project design and management, right through to commissioning and operations management.



SERVICES

WHAT WE DO

Through our diversified skills coupled with high level of experience and resourceful leadership, we have developed a structure to deliver Geological, Mining, and Metallurgical as well as Engineering solutions.

Together with our partners we provide comprehensive and efficient solutions to the mining and mineral processing industry, which includes but not limited to. :

Mineral Resource Business Development Solutions

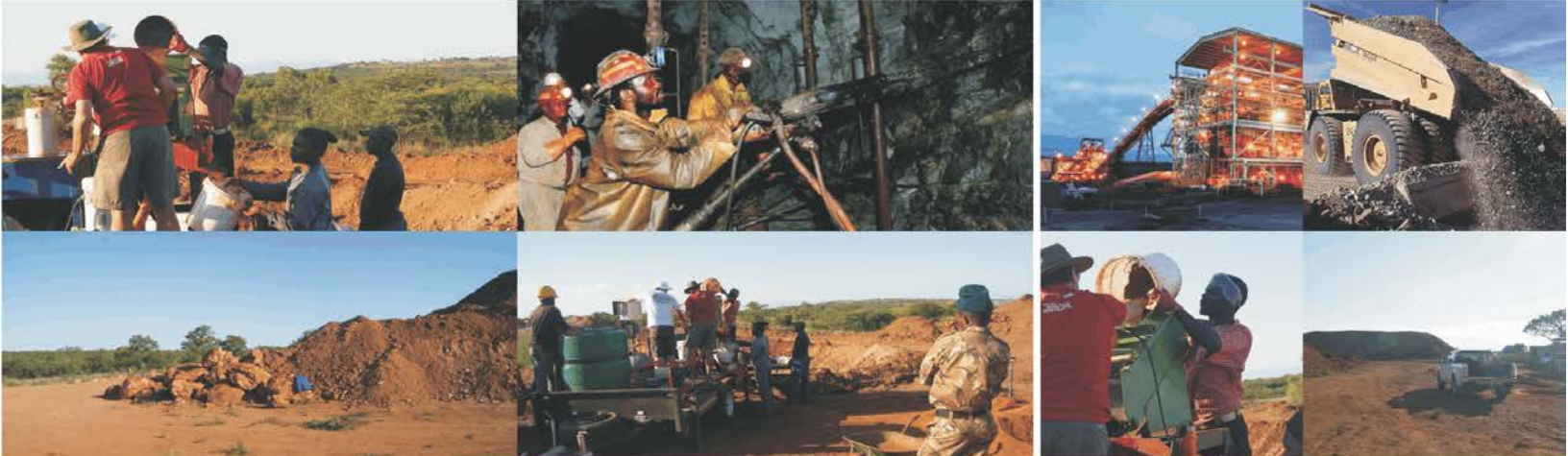
- Conceptual studies and Exploration
- Pre- Feasibility & Feasibility Studies
- Metallurgy and Engineering Designs
- Mineral Processing Plant Construction
- Projects and Programme Management

Metallurgical Solutions

- Process commissioning
- Systems development and debottlenecking in
 - Safety and risk management
 - Cost planning and control
 - Preventative maintenance, optimizing the plant availability and utilization
 - Short interval process controls
- Troubleshooting and process optimisation
- Metal accounting audits and sampling campaigns
- Human capital development through skills transfer and training programs
- Operations outsourcing
- Raw material supply

Engineering Solutions

- Repairs and maintenance of rotary equipment's, mainly flotation cells and static mills
- Design, fabrication and installation of steel, HDPE and poly prop pipe systems
- Design, fabrication and erection of Structural Steel
- Design, fabrication, lining and erection of Plate work including tanks and chutes



ASSOCIATES

- Building construction and Civil Works
- Electrical and Instrumentation installation in process plants
- Industrial painting and corrosion protection of steel and plate work
- Compressed air system design and installation
- Rubber Lining of Tanks
- Erection, installation and refurbishment of towers and antennas.

Solutions in African Countries

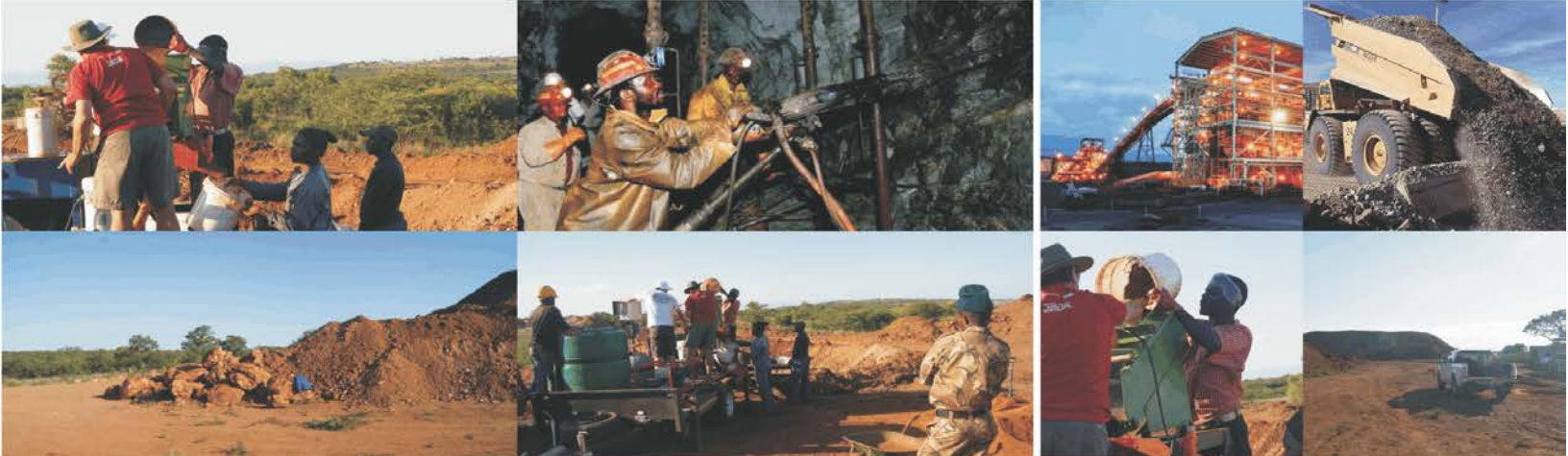
- Co-ordination and management of environmental and other regulatory permits application process.
- Projects appraisals
- Capital funding and partnering
- Equipment design and sourcing
- Raw material preparations and supply
- Exploration and sourcing Metallurgical Coke and Anthracite
- Exploitation of Chromite and Magnesite Outcrops in Zimbabwe

Subsidiaries and Partnerships

Through our stringent selective process we have formed service networks with reputable partners to provide our clients with ease access to reliable services that has been tested and are directly endorsed by WattPower Minerals (PTY) Ltd.

These services includes but not limited to:

- Process Automation
- SCADA designs and optimisations
- Corrosion protection - Application of a unique patented sealant that will give extended life to structures, pipes, concrete, equipment with up to 30yrs guarantee.
- Preventative maintenance systems and equipment monitoring
- Chemicals screening and selection



MISSION STATEMENT

VISION & STRATEGY

- **Vision statement**

Our Vision is to be a World Class Corporation that provide Minerals Processing Services to unlock the rich African potential and generate wealth in economies of African countries, through creation of sustainable jobs in and around our host communities.

- **Mission statement**

Our mission is to be a global African Company, operated by Africans for Africans to deliver a high quality service to our clients on time, and at all times.

VALUES

We will conduct our business in a manner that upholds –

- **Safety**

People are the most valuable assets to our organization and we place the highest level of focus on developing and implementing safety and risk management systems that ensure zero harm to our employees, communities and the environment we operate in.

- **Respect and Unity**

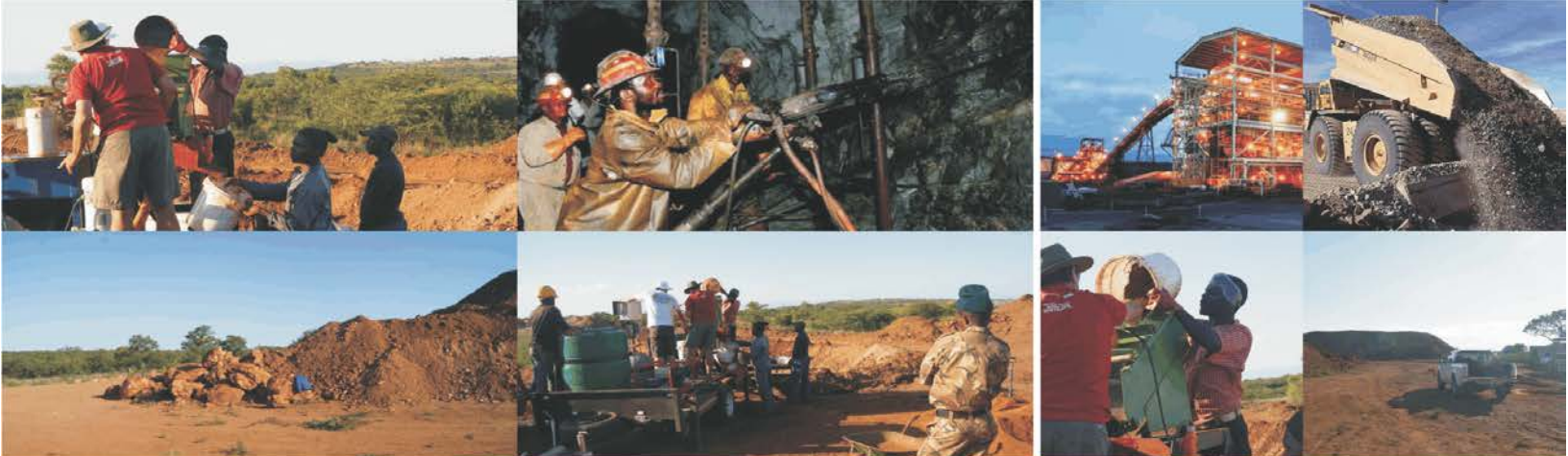
We treat each other with respect and preserve our dignity. We understand that we operate in multi-racial societies and as such undertake to create a non-racial and non-sexiest environment where everyone has equal opportunities.

- **Honesty and Trust**

We are transparent in the way in which we conduct our businesses and our employees, communities, partners and other stakeholders are treated fairly as guided by our code of ethics.

- **Accountability**

We are accountable for our decisions and actions, and we always ensure that we deliver on all our promises.



BUSINESS STRATEGY

BUSINESS OBJECTIVES

Our main objective is to develop and grow African communities. We will achieve this through exploration of our mineral resources and by developing sustainable mining assets in partnerships and with our host communities, authorities, private businesses and other stakeholders. This will be achieved by our quest to continuously improve processes to optimize efficiencies and ensuring that our operations are profitable even in unfavorable economic climate.

We have adopted an effective cost and maintenance management system with benefits of optimizing the productivity of operations with minimum unplanned downtimes resulting in higher availability and utilization.

Our customized engagement process is well defined with quick turnaround times to suit the operation, where improvements are realized in short to medium term periods allowing our clients to be in a position to realize rewards. Our proposal structure is versatile and renders our clients a choice best suited to their business needs and operating strategy.

- **Growth strategy**

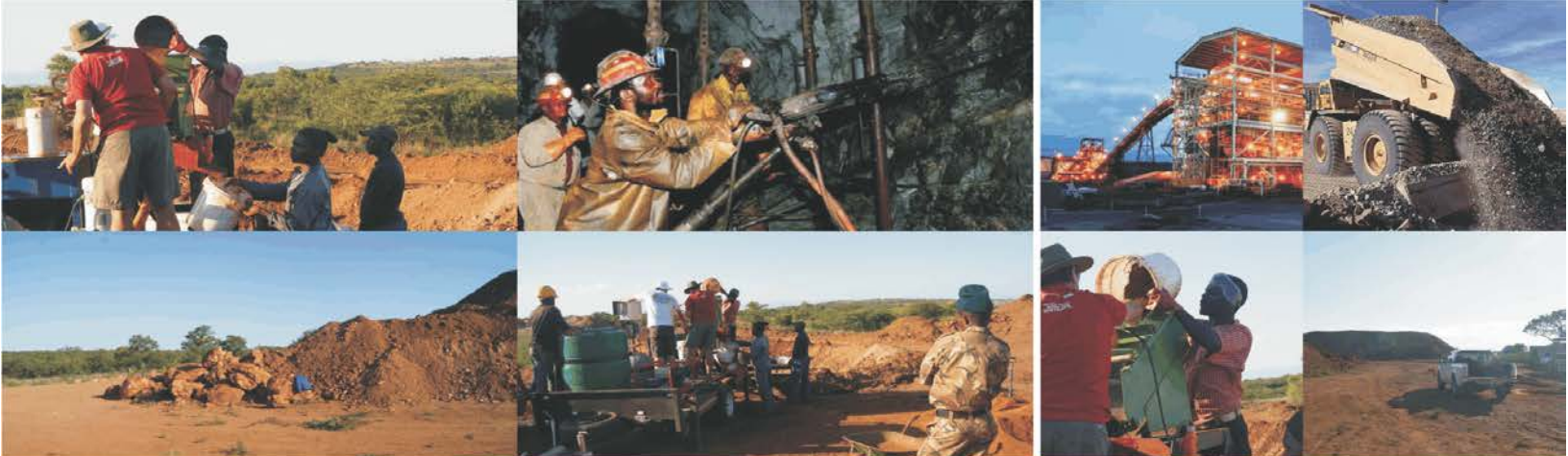
Our current strategy is to partner with small – medium miners and develop safe and sustainable assets within the African continent. We will grow operations by engaging in strategic partnerships with mining houses through service level agreements, equity and capital partnering.

We will also empower our clients by implementing a robust management system that will improve the operational productivities while developing the operations personnel on effective operations management to ensure sustainability.

- **Business competitiveness**

We found our niche in developing countries in Africa, our origins and commitment to the continent geared us up to get our hands in mud where most players don't want to be. Yes we are those mud diggers who find value when people say it is tough in Africa. We are the ones who walks through the bushes and nest a foundation, the ones who will always be proud to provide growth to the host communities and be associated with them throughout the entire process. Our passion for Africa will make us strive.

Our business is not to identify and leave you with challenges, but to take challenges out of your business so you can focus on what you do best.



EXECUTIVE MANAGEMENT



LEBOGANG MODISE

Managing Director

B. Tech (Metallurgy); P. Grad (Projects Management)

Affiliations: SAIMM, MMMA

Lebogang Modise is one of the founding members of WATTPower Mineral Processing (PTY) Ltd. He gained a wealth of experience working for different gold mining companies in South Africa over the past 15yrs, he has been responsible for leading operations and project teams as a Metallurgical Manager, Business Leader and Projects Metallurgist. With his great leadership skills he brings growth and sustainability to the team, far reaching beyond what is considered to be the limit. Let's just say he will do it for you.



SIPHO MDALOSE

Divisional Director, Metallurgy

B. Tech (Extractive Metallurgy); P. Grad (Physical Asset Management)

Affiliations: SAIMM

Sipho is a Minerals Engineer with expertise in Feasibility Studies on Platinum Ore Bodies and Applied Research in various Process Engineering Technologies in the Minerals Industry. He has extensive experience in production management of Platinum operations, and has over the years established credence in expertise of operational performance turnaround, particularly safety management and profitability enhancement. His career spans over the past 15yrs in South African Mining industry and since joining WATTPower Mineral Processing as the Divisional Director, he has been actively involved in new business development and strategic positioning of the company.



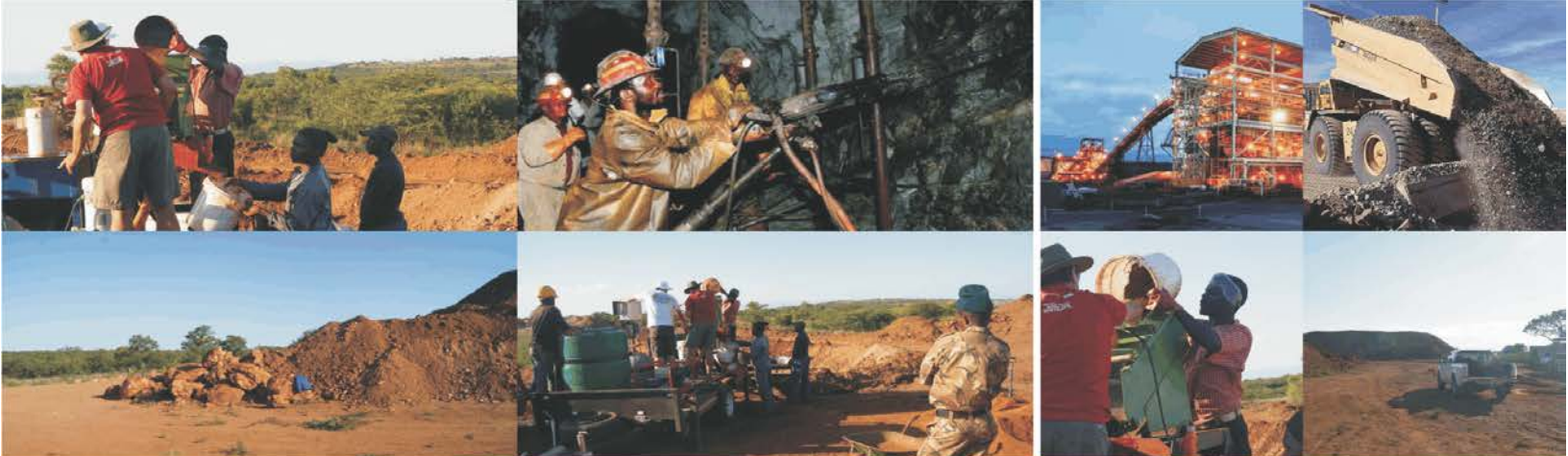
TREVOR MFEKA

Divisional Director, Engineering

B.Tech - MechEng, PMP (PMI), MAP (WBS), MBL (Unisa SBL).

Affiliations: ECSA, PMI

Trevor Mfeka is one of the founding members of WATTPower Mineral Processing (PTY) Ltd. After graduating Trevor started his career as a mechanical engineer working for engineering and mining companies over the past 18yrs, he specialised in Project Management, managing projects of over R1 Billion. Trevor also engaged his entrepreneurial side solely founding WATTPower Solutions, an engineering, project management and construction company which has constructed mineral processing plant modules in South Africa and Malawi. It is from this company that WATTPower Minerals Processing was conceived.



OPERATIONS

OPERATIONS

Our focus is to develop sustainable mining assets within the African continent. We have previously engaged in Gold mines conceptual studies, efficiency optimization and engineering projects in South Africa, Tanzania, Zimbabwe and Malawi. We also completed a scoping study for Antimony mine in Zimbabwe

PREVIOUS PROJECTS

- **Mining and Minerals processing**

Madonsi Gold Project, Limpopo, South Africa - Development and implementation of a gold mining and processing business model.

Nyamtondo Gold Project, Geita, Tanzania - Evaluation of Green field gold project.

Mutare Gold Project, Zimbabwe - Consolidation and mining plan of artisanal gold miners to optimize operations costs by sharing resources.

Zvishavane Antimony Project, Zimbabwe - Mining scope development for a small Stibnite mining company.

Gold 1, Mooder East Operations, South Africa – Metallurgical process valuation and gold accounting audit. Project management for the gold plant expansion project. Efficiency optimization of the gold plant processes.

Pan African Resources, Evander Gold Mines, South Africa – Metallurgical service: Process optimization, Mentoring and leadership guidance to management team, development of management and maintenance systems,

- **Engineering**

Village Main, South Africa - Cons Murch Metallurgical Gold plant refurbishment.

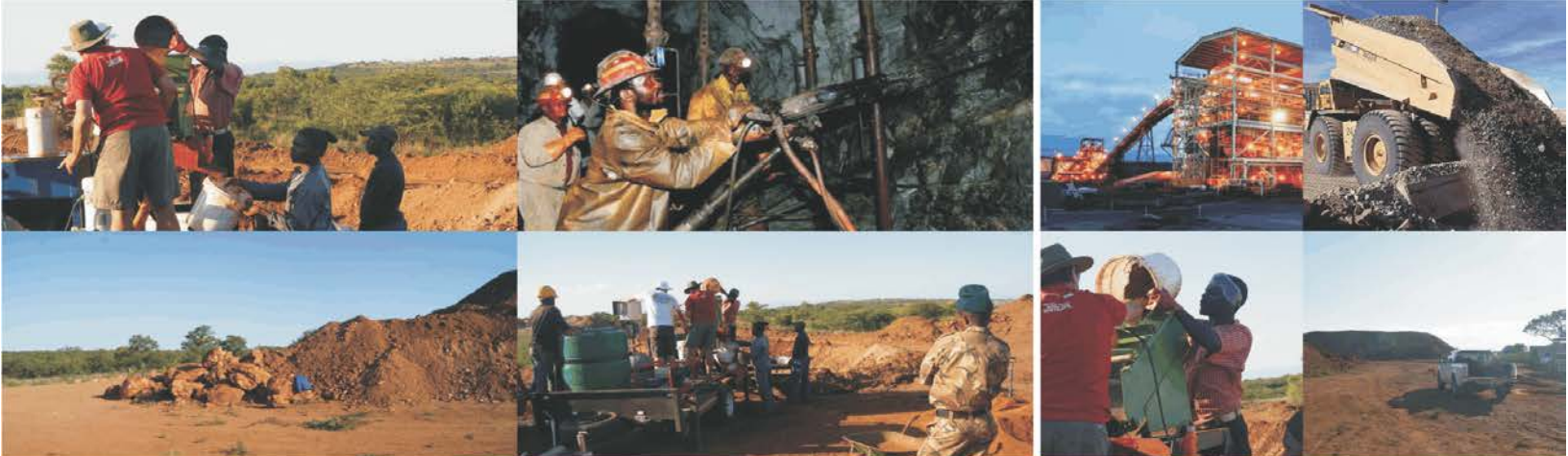
Paladine Energy, Kayalekera, Malawi - MgO tank and pipe work fabrication and erection.

Anglo Platinum, South Africa – Matte 800Ton Bin, pipework and Structure fabrication and erection.

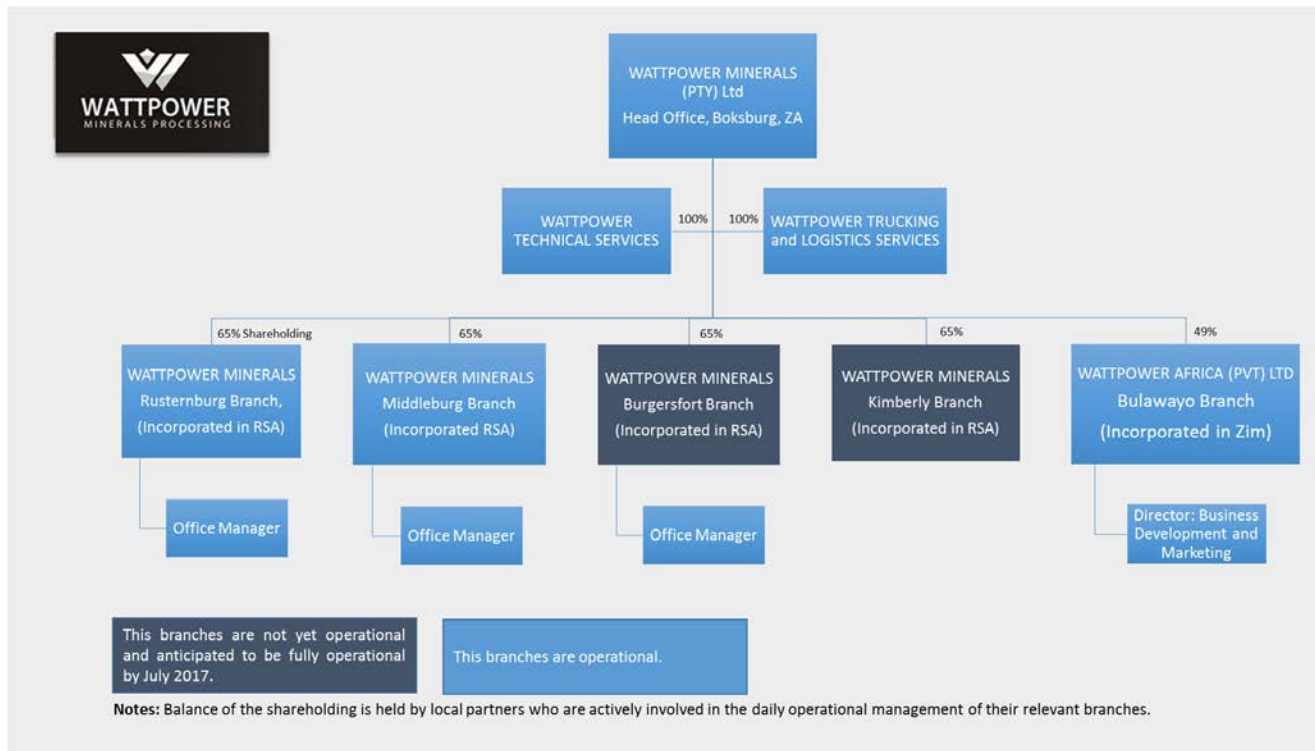
Paladine Energy, Kayalekera, Malawi – Kayalekera Eluate Tanks, Structure and Pipework, Electrical Install.

Syrink, South Africa - HVAC Installation

GRNQ, South Africa - Coal Wash Plant refurbishment



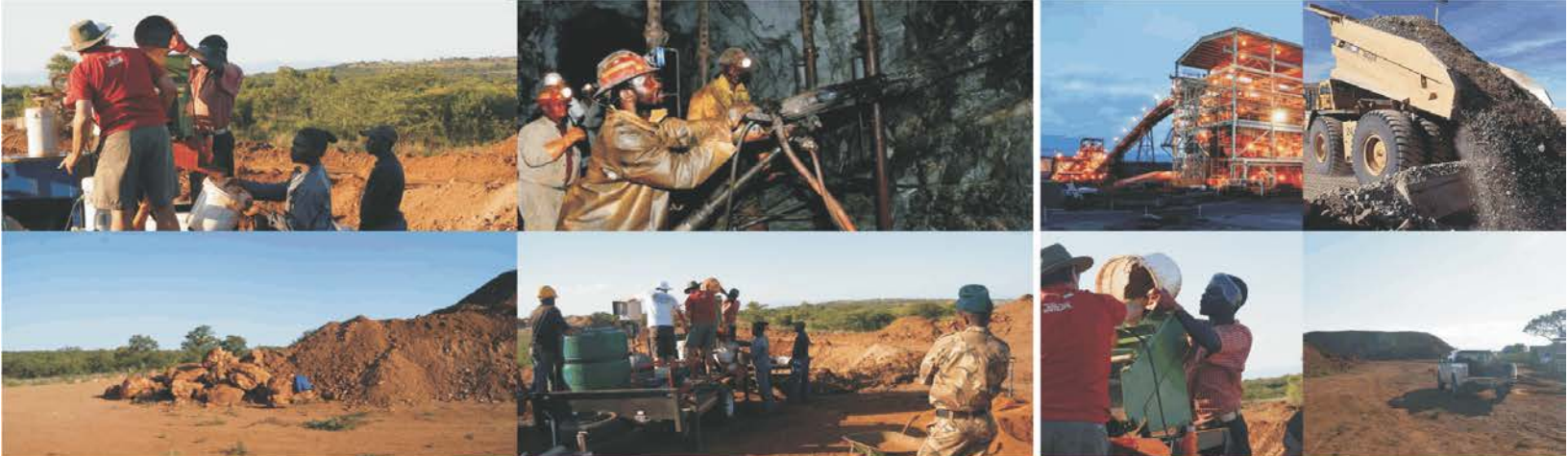
ORGANISATIONAL STRUCTURE



Our branch organizational structure is guided by our Mission to grow Africa by empowering and developing our operating area partners through skills transfer, by training and involving them in the day to day activities of the business.

Through our stringent selection processes and formalized support structure we have ensured to always deliver high quality services to our clients with quick turnaround times.

Compliance: As law abiding citizens we support and have ensured that our company and all our branches complies with the statutory requirements of the countries we operate in and we have committed that we will not enter into or have any association with companies that fails to comply. We and all our local branches are officially rated **Level 1 B-BBEE** according to the governing Codes of Good practice.

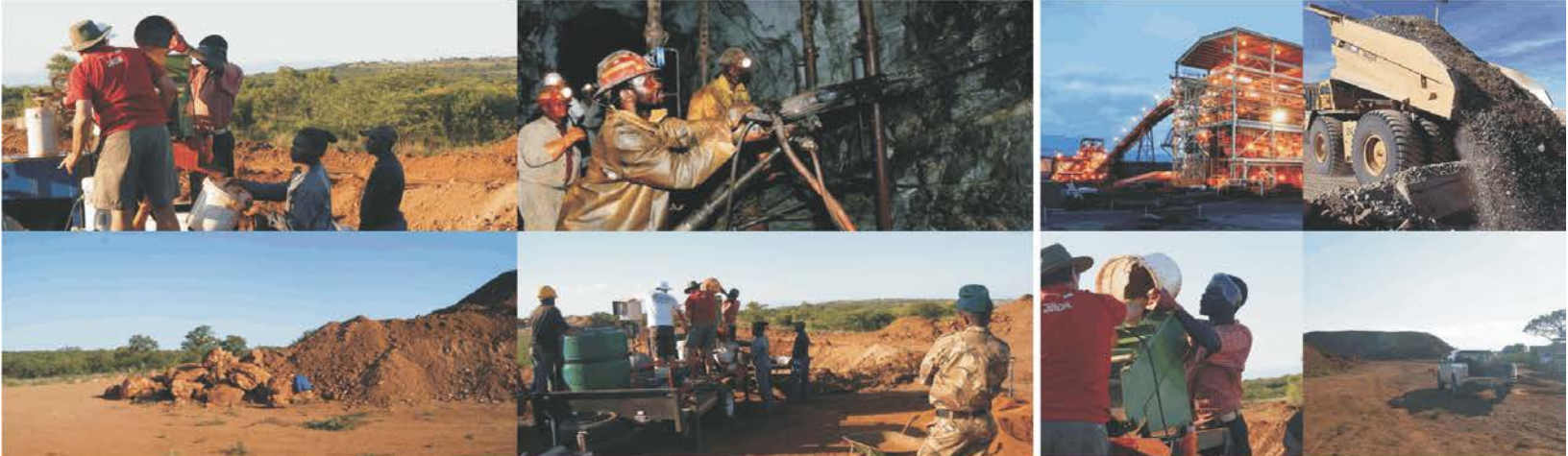


OUR CLIENTS

VILLAGE MAIN REEF

GOLD ONE
GROUP LIMITED





CONTACTS



Tel: +27 (0) 10 003 1635
Cell: +27 (0) 79 999 2834
Fax: +27 (0) 86 541 7868
Email: info@wattpowerminerals.co.za
Web: www.wattpowerminerals.co.za

Unit 7, Dunswart Plaza
5 Main Reef Road
Boksburg
1508